

Energy Efficiency Rating		
	Current	Potential
Very energy efficient - lower running costs		
(92 plus) A		
(81-91) B		
(69-80) C		
(55-68) D		
(39-54) E		
(21-38) F		
(1-20) G		
Not energy efficient - higher running costs		
England & Wales	EU Directive 2002/91/EC	

Environmental Impact (CO ₂) Rating		
	Current	Potential
Very environmentally friendly - lower CO ₂ emissions		
(92 plus) A		
(81-91) B		
(69-80) C		
(55-68) D		
(39-54) E		
(21-38) F		
(1-20) G		
Not environmentally friendly - higher CO ₂ emissions		
England & Wales	EU Directive 2002/91/EC	

The Stadbury, Jessamy Road, Weybridge, Surrey, KT13 8BT



£2,350 Per Calendar Month

OPEN DAY MONDAY 22ND JUNE 11-12

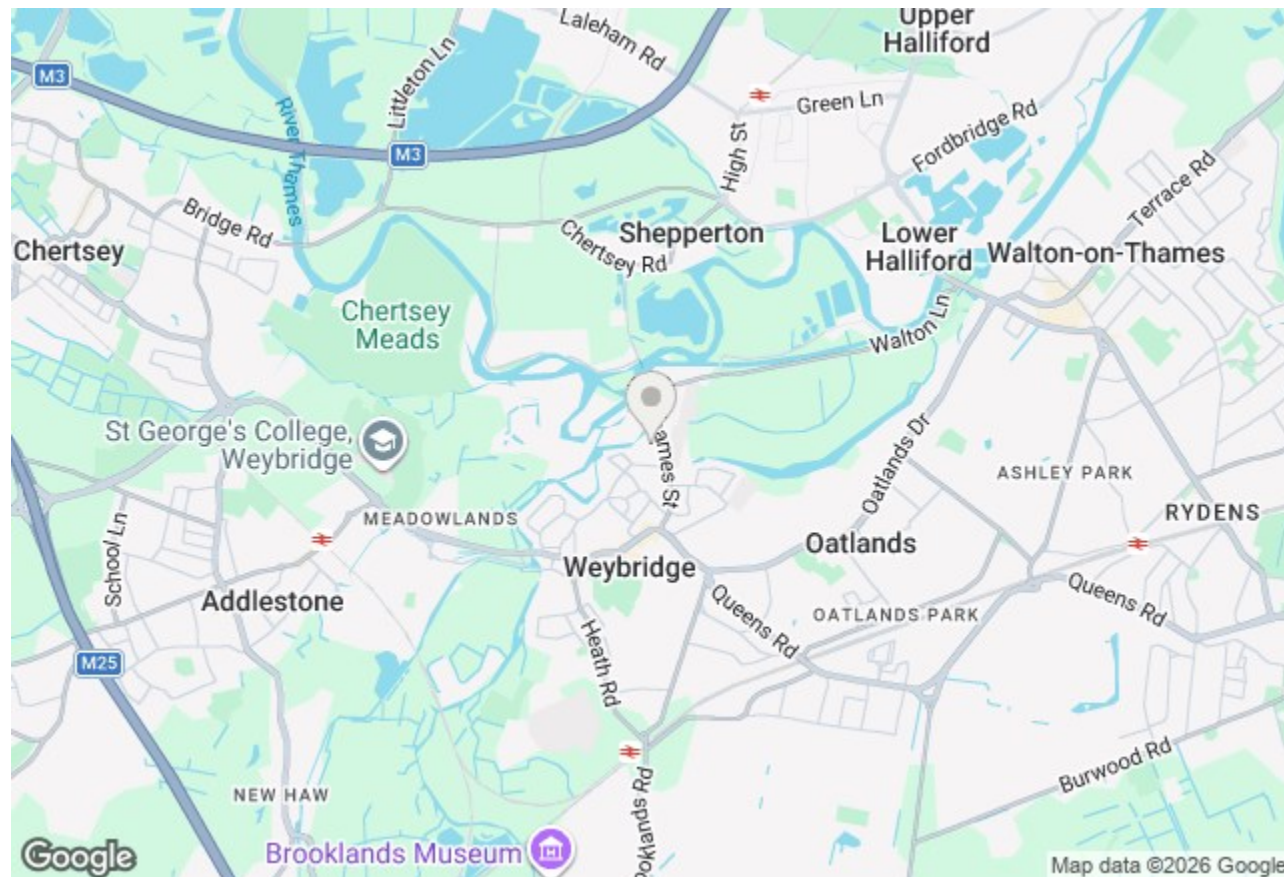
Available 1st August and offered unfurnished, this beautifully presented two double bedroom, two bathroom home enjoys a stunning position overlooking the River Thames.

The spacious accommodation comprises a large living/dining room with direct access to a private decked area, providing breathtaking river views and the perfect space for relaxing or entertaining.

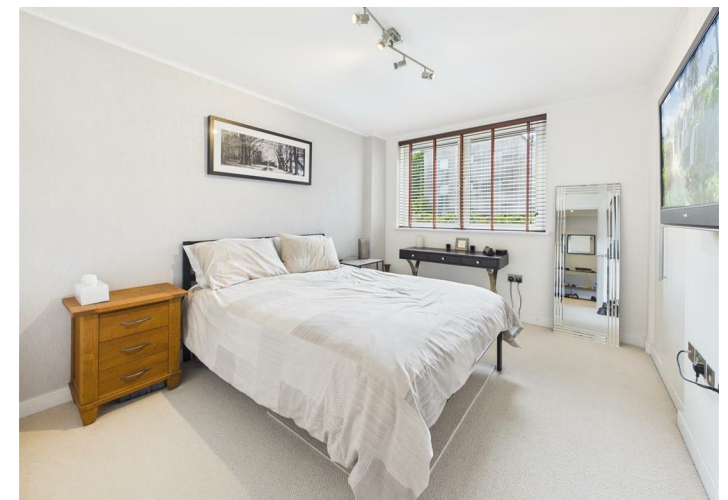
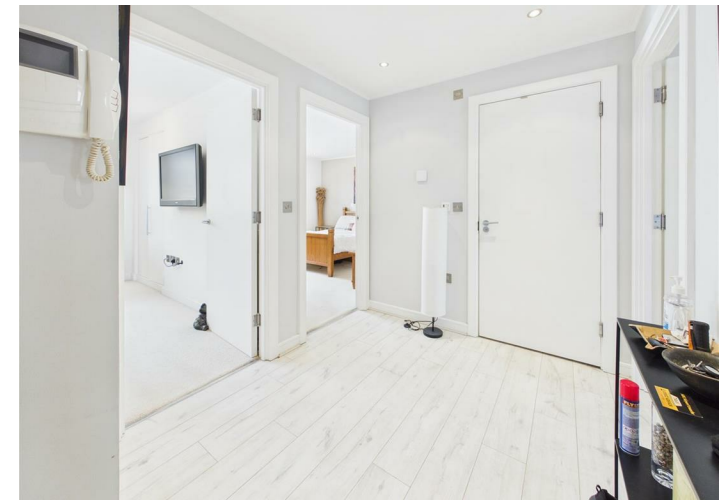
The property also benefits from a private garden, as well as access to further well-maintained communal grounds. The modern kitchen is fully equipped with integrated appliances including a fridge freezer, washing machine and dishwasher.

Both bedrooms are generous doubles, with the principal bedroom benefiting from an en-suite shower room. A separate contemporary family bathroom serves the second bedroom, making this an ideal two bed, two bath property for professionals, couples or small families.

Further benefits include an allocated parking space and an enviable riverside setting, whilst remaining conveniently located for local amenities and transport links. Early viewing is highly recommended.



Jessamy Road, Weybridge, Surrey, KT13 8BT



- Available 1st August and offered unfurnished
- Two generous double bedrooms
- Separate contemporary family bathroom
- Private garden plus beautifully maintained communal grounds
- Modern fitted kitchen with integrated appliances
- Stunning riverside position with direct views over the River Thames
- Principal bedroom with modern en-suite shower room
- Spacious living/dining room with access to a private decked terrace
- Allocated parking space